



Thank you for choosing McWane Science Center!

For the best experience at McWane, review your attached confirmation and the information below:

Carefully review chaperone pricing below before sending pricing information home with students.

Arrival Details Confirmation

- We will reach out to you via email approximately 3 weeks prior to your field trip date to confirm arrival details. This helps ensure an efficient field trip check-in process.
- Final numbers can be edited up until check-in on the morning of your field trip.
- **A wristband packet will be mailed to the address provided on your request form.** Let us know if you have not received it one week prior to your field trip. Ensure your group is wearing wristbands before you arrive at the McWane Science Center.
- **Assign chaperones and organize your group prior to your field trip day.** Our lobby cannot accommodate group organization for more than a few minutes due to space limitations. Chaperones should check in with their child's teacher, gather their assigned students, and proceed quickly into the Adventure Halls.

Payments can be made in the following way:

- **Credit Card** – Upon arrival or by calling (205) 714-8414
- **Checks** – Upon arrival or
- **Mailed to:**

**200 19th St N
Birmingham, AL 35203**

Please allow 2 weeks for shipping and processing of any mailed checks.

Be sure to include your reservation number on all forms of payment and change requests.

If you need to make any changes, you may contact us at reservations@mcwane.org or (205) 714-8414.

CONCESSIONS PACKAGE

Consider saving time & money by adding a concessions package on to your reservation. These must be added to your reservation and paid for prior to your field trip date.

- Small Concession Package – 12 oz drink and small popcorn - \$7.50
- Kid's Pack – kid's tray with popcorn, juice, and fruit snacks - \$4.00



FORWARD this to all adults attending with your group!

Field Trip Arrival

The Field Trip Greeting Team will meet your bus at the curb – McWane has bus cutouts on both 19th Street and 2nd Avenue.

A lead teacher must visit the ticketing counter to:

- check-in
- confirm numbers
- pick-up IMAX tickets (if included on your reservation)

Carpool Groups – If you have a lunch space reserved, your blue **lunch transportation bin** will be inside the lobby, on the 2nd Avenue side. Our lobby cannot accommodate group organization for more than a few minutes due to space limitations. Arrange for the lead teacher to arrive prior to students.

As students arrive, they will check in with their teacher and proceed into the Adventure Halls.

PARKING

- Our parking deck is attached to the McWane Science Center, with the **entrance being on 2nd Avenue**. The parking deck elevators take you to our lobby.
 - **Parking is \$5.00**
 - You may purchase a parking token at the ticketing counter or pay with cash/credit card when exiting the parking deck.
 - Bus Parking – complimentary bus parking is available in our lot. Our greeting team will greet your bus upon arrival and call the shuttle to bring your driver back to McWane. The shuttle is not continuous and only available at drop-off time. Per policy, no children are allowed at the bus lot. To return to your bus, the shuttle will depart McWane every 30 minutes from 11:30 to 2:30.
-

CHAPERONE INFORMATION

- Please wait in the Field Trip Greeting Area for your child's class to enter the building. We ask that you keep the main entrance paths clear to assist with traffic flow when the children arrive.
- If your ticket was purchased through your school, your teacher will provide you with an admission wristband.
- If your ticket was NOT paid through your school, regular priced admission tickets can be purchased online or upon arrival while you wait for your child to arrive.
- **PLEASE STAY WITH YOUR ASSIGNED GROUP OF CHILDREN**
Thank you for choosing to be a chaperone for your group. Chaperone attention is key to having a great experience during the visit. Please make sure that you are always with your child and/or group of children. For safety purposes, McWane Science Center **requires** that the chaperone to student ratio be maintained throughout your visit.
- **IF YOU ARE UNABLE TO FIND A CHILD IN YOUR GROUP**
If you are unable to locate a child in your group, please tell any staff person or proceed to the security check point at the entrance to the Adventure Halls on Level One. They will assist you. It will be important to be able to describe the children in your group.

PARENT / CHAPERONE TICKETS

If parent/chaperone tickets are not included in your reservation, parents/chaperones can purchase tickets upon arrival at ticketing or online at [McWane Science Center Tickets](#).

**Prices when not paying through the school & on the Field Trip Reservation:
Adventure Halls \$20.95, IMAX \$9.95, or Combo (Adventure Halls + IMAX) \$25.95**

Please communicate your IMAX movie time with your chaperones if this is included in your itinerary. Tickets for IMAX programs are limited. All visitors must have a movie ticket to enter your IMAX program.

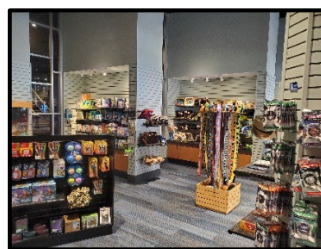
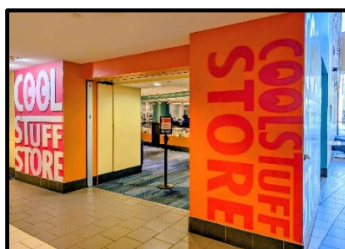
Group MUST meet Minimum Adult to Child ratio

Pre-Kindergarten – 1 adult for every 5 students
Elementary (Grades 1 – 5) - 1 adult for every 10 students
Middle School (Grades 6 – 8) - 1 adult for every 15 students
High School (Grades 9 – 12) - 1 adult for every 20 students

McWane Science Center reserves the right to reject booking request and day of trip entry into the center should group not meet chaperone requirements during their visit.

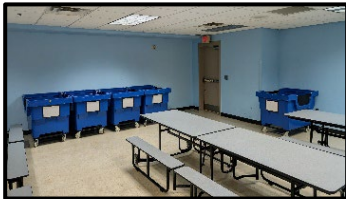
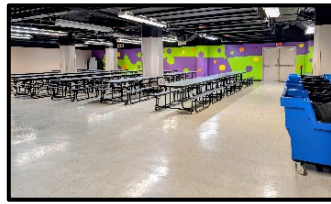
COOL STUFF STORE

- Remember to allow 30-45 minutes for larger groups inside the Cool Stuff Store.
- Accompany your assigned group inside the store and assist with money management when there are long lines.



LUNCH INFORMATION

- Lunchtime listed on your reservation is for an eating space only. Food is not provided by McWane Science Center.
- **Please NO coolers larger than 31x17 in.**
- Lunch times must be scheduled for use and are subject to availability
- Upon Arrival: Have chaperones (assigned **prior** to arrival) to unload your group's lunches into the bins provided. Greeting team cannot load/unload lunches into/out of transportation bins.
- Prior to departing, your group can pick up your lunch bin from the lobby (near the locker area/restrooms).
- Pre-determined scheduled lunches times are for **30 minutes**. If the group is late for scheduled time, the time CAN NOT be extended.
- Packed Lunches from home or school are welcome.
- The Bean Sprouts Café is located in the McWane Science Center Lobby. For catering inquiries, contact them directly at: brandi.hoover@beansprouts.com
Menu available: [Bean Sprouts McWane Field Trip Catering](#)
- **COMMERCIALY PREPARED FOODS ARE NOT ALLOWED.** This includes food delivery.



NO FOOD OR DRINK ALLOWED IN ADVENTURE HALLS

- Snacks and drinks are **only allowed** in the lobby or the vending machine/snack area, located on the Lower Level



IMAX and CONCESSIONS

- If your group has reservations for an IMAX movie, please confirm the time with your teacher. Our movies do not have trailers and **start promptly at the designated start time.**
- Consider including pre-purchased (and pre-paid) concessions on your reservation to save time & money! **\$7.50** – small popcorn & 12 oz drink or **\$4.00** – kid’s tray with popcorn, juice, & fruit snacks
- If your group has not pre-purchased concessions and wishes to purchase individually, we recommend entering the concessions line 30 minutes prior to your IMAX program start time.
- IMAX Documentaries are 45 minutes in length, and movies are run on tight schedule. If you are unable to arrive at your designated time, you may be denied entrance to the movie. This policy is to provide seated visitors with a positive IMAX movie experience.
- Remind your group to visit the restroom before the movie start time.
- Once the movie is over, please exit the theater **up the stairs** and through the exit door on the second floor.



ITTY-BITTY MAGIC CITY

Only accessible for children in kindergarten and younger.

Specific times CAN NOT be requested, and entry is available on a first-come, first-serve basis.

Itty-Bitty Magic City has a maximum occupancy and may experience wait times.

FIELD TRIP PRIVATE EDUCATIONAL OPPORTUNITIES

- If your group has booked a private educational program on your reservation, be sure **all adults with your group know the times** on your itinerary as well as **which floor** to be on for your educational program.
- Your group must arrive for an educational program **10 minutes prior to start time.**

Rushton Theater is located on the 1st floor.

Classroom Programs are located on the 3rd floor.

