

## What's Beneath the Gulf's Waves?

Find Out on Page 4







## Letter from the President

It's back to school time! Children are excited about meeting new teachers, reuniting with old friends and meeting new ones, and getting ready for a new year of learning.

Back to school season is also an exciting time at McWane. Most people know us as a great place for family fun and learning, and we are very proud of how eager kids are to spend time at McWane with their parents and grandparents. But we are equally proud of the important work we do with school systems across Alabama. Beginning in September, school buses line up around McWane on weekdays, bringing children and their teachers to explore our Adventure Halls, attend curriculum-based programs led by our education staff in one of our seven classrooms, and view STEM based documentary films in our IMAX Theater. Last year we served nearly 70,000 students from 52 counties in Alabama through field trip activities at McWane.

Did you know that we also send our education staff into classrooms, libraries, and community centers across the state? Our McWane on the Move program provides STEM education activities for individual classrooms and school assemblies, serving schools that can't send their students to our facility or that want a follow-up program to supplement their field trips to McWane. Last year we served 14,000 children through McWane on the Move. We also provide professional development opportunities for teachers, helping them develop the skills to bring STEM ideas to life in their classrooms.

Through generous support from members and donors like you we raise scholarship funds to ensure that every school has the opportunity to benefit from our educational programs regardless of their ability to pay. Thank you for partnering with us to bring STEM education to schools throughout Alabama!

Amy Templeton  
President and CEO

# Contents



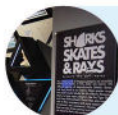
## COMING SOON TO IMAX

Check out all the amazing movies we have in store



## CALENDAR OF EVENTS

See what special days and events are coming up



## SHARKS, SKATES, & RAYS: OH MY!

Get the scoop on our newest exhibit in World of Water



## FOSSIL FISHES OF ALABAMA

Learn about our new aquatic fossil database



## ITTY BITTY CRAFT

Your kiddo will go NUTS for this Fall-themed activity



## SO LONG FOR NOW!

Help us say goodbye & thank you to our Summer Teen Volunteers

## 2024 BOARD OF TRUSTEES

Stephen Owens, Chairman • Harrison Bishop, Vice Chairman  
Zac Riddle, Treasurer

Pronce Acker, Galvin Billups, Maggie Bolin,  
William W. Brooke, Henna Budhwani, Milton Davis, Helena Duncan,  
Arthur Fisher, Jr., Courtney French, David Germany, John Harbert, Robby  
Hayes, David Killion, Amanda Loper, Farah Lubin, Katie Bee Marshall,  
Barbara Martin, Kate Mather, Lee Meadows, Jeanne Monk,  
Lenus Perkins, Matt Pierce, Carolyn Ratliff, Adrienne Starks, Finis St. John V,  
Whitney Wright

## PRESIDENT/CEO

Amy W. Templeton

## 2024 ENDOWMENT BOARD

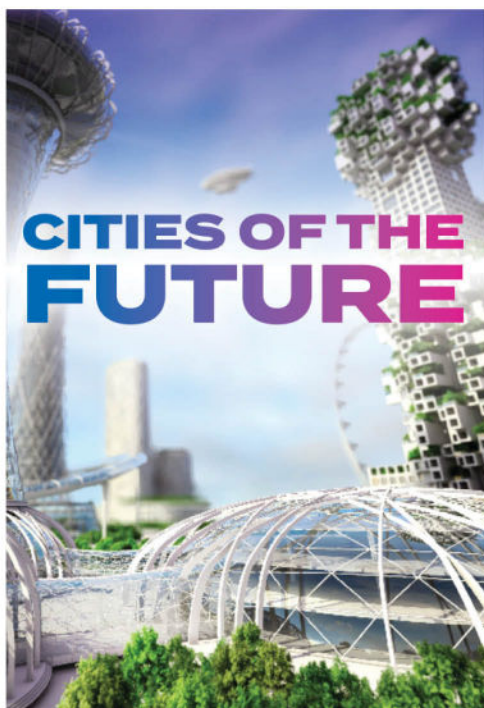
William W. Brooke, President

Nina Botsford, Frank Caley, Sheri Cook, William Dow, Norman Jetmundsen,  
Charlie Miller, Stephen Owens, Charles Powell, Travis Pritchett,  
Zac Riddle, Ashley Robinett, Bowen Thagard, Forest W. Whatley, Jr., TJ Willings,  
Nicholas Willis

*McWane Science Center is a 501(C)(3) nonprofit organization.  
Our mission is to spark wonder and curiosity about our world through  
hands-on science experiences*



# THIS SEASON IN IMAX



## Cities of the Future

Imagine stepping 50 years into the future and finding smart cities designed to be totally sustainable. Renewable energy is our primary power source, space-based solar power provides solar energy 24 hours a day, everything is recycled, and you have your own individualized pods that run on little or no energy. You can also ride an electric flying vehicle! Traffic jams are a thing of the past. This isn't science fiction. Engineers are making plans for a sustainable world right now. And it's coming to the giant screen! Cities of the Future is produced by MacGillivray Freeman Films in association with the American Society of Civil Engineers, the same award-winning team that brought you Dream Big: Engineering Our World.



## T.Rex

For over a hundred years dinosaurs have inspired and thrilled audiences, commanding blockbuster status in museums and at the box office. But among them towers a king—a tyrant lizard king. With leaps in CGI wizardry and revelations in tyrannosaur paleontology over the past twenty-five years, the time has come to revisit rex in the world's prestigious museum cinemas, from rexling to teen to fightin' prime. Chronicling a remarkable discovery in the badlands of Hell Creek in the summer of 2023, this immersive giant screen film explores the life and times of the Greatest Of All Tyrants - the GOAT.

## SPECIAL SHOWING

### Wicked

Showings start on Nov 27

Directed by acclaimed filmmaker Jon M. Chu, Wicked is the first chapter of a two-part immersive, cultural celebration. Wicked, the untold story of the witches of Oz, stars Cynthia Erivo as Elphaba, a young woman, misunderstood because of her unusual green skin, who has yet to discover her true power, and Ariana Grande as Glinda, a popular young woman, gilded by privilege and ambition, who has yet to discover her true heart. The two meet as students at Shiz University in the fantastical Land of Oz and forge an unlikely but profound friendship. Following an encounter with The Wonderful Wizard of Oz, their friendship reaches a crossroads and their lives take very different paths. Glinda's unflinching desire for popularity sees her seduced by power, while Elphaba's determination to remain true to herself, and to those around her, will have unexpected and shocking consequences on her future. Their extraordinary adventures in Oz will ultimately see them fulfill their destinies as Glinda the Good and the Wicked Witch of the West.



IMAX® DOME

IMAX SEASON PRESENTED BY

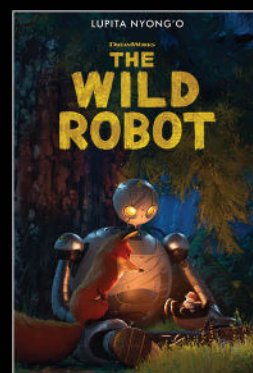
REGIONS



BEETLEJUICE BEETLEJUICE  
SEPT 9



TRANSFORMERS ONE  
SEPT 20



THE WILD ROBOT  
SEPT 27



RED ONE  
NOV 15



# PLAN AHEAD



## Community Heroes Day

**September 14**

From firefighters to police officers to teachers and more, McWane says "thank you" to the everyday heroes that make our community strong. Meet these real-life heroes, explore their tools and vehicles, and participate in hands-on activities that showcase the science behind their amazing work.

## Week of Code

**September 18 - 21**

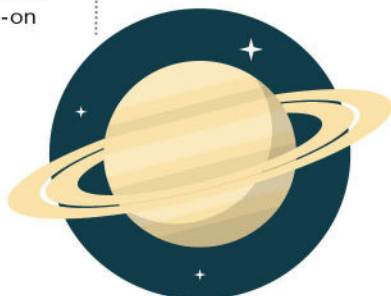
We've got the perfect formula for byte-sized fun. Join us for a week of coding workshops and activities as we click into the creativity behind computers and robotics.



## Astronomy Week

**October 9 - 12**

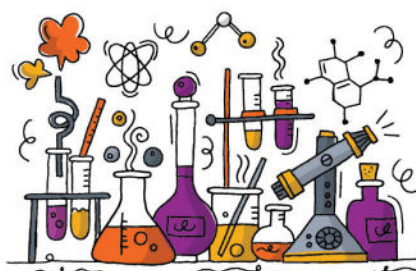
Reach for the sky and unveil the mysteries of outer space in this week of cosmic curiosities. From building moonbases to charting constellations, these hands-on programs are out-of-this-world.



## PNC Grow Up Great Mobile Learning Adventure

**October 19 - 20**

Join PNC and us for a weekend surrounding their traveling exhibit, providing an opportunity for parents and caregivers to learn about the importance of early childhood education while also engaging in fun activities with their children.



## National Chemistry Week

**Oct 23 - 26**

Find us in the lab for a week of scientific discovery and skill-building as we experiment our way to a better understanding of the world around us. Join us all day Friday, October 26th for demonstrations and hands-on activities with Southern Nuclear.

## Spooky Science

**Oct 30 - 31**

Get ready for a spine-tingling dive into the eerie side of science. Create mysterious concoctions, build a monster in Frankenstein's (Tinker) Lab, and meet a few resident creepy crawlies during these two days of hair-raising fun.



## National STEM Day

**November 9**

Celebrate advancements in STEM with a special selection of design challenges, demonstrations, and lab experiences that highlight the lives and careers of some of the world's greatest innovators. Join us each hour beginning at 10:00am for a new, mini adventure in science.

## Taste of Science

**November 29 - 30**

It's the most delicious time of the year! Satisfy your thirst for knowledge as we cook up some kitchen chemistry with tasty experiments and egg-citing demonstrations.



## Winter Ca December 30,

Learn more at mcw  
remember that McV



VISIT [MCWANE.ORG](http://MCWANE.ORG) FOR DETAILS



# Fall in Love

with  McWane Science Center

Use Code **FALL24** to Get  
**\$10 Off** of a New Membership

Learn more at  
[mcwane.org/membership](http://mcwane.org/membership)  
or call (205) 714-8318

Valid between  
Sept 2, 2024 -  
Oct 31, 2024

## Camp McWane

### Camps

January 1, 2, 3

[mcwane.org/learning/parents/camps](http://mcwane.org/learning/parents/camps) and  
McWane Members get a discount on camps!

Registration  
opens early  
October!





# Breathing New Life Into

## New Exhibit Unveiled! *Sharks, Skates, and Rays: Beneath the Gulf Waves*

McWane Science Center proudly presents its latest exhibit, *Sharks, Skates, and Rays: Beneath the Gulf Waves*, offering visitors an in-depth exploration of the rich diversity of cartilaginous fish found in the northern Gulf of Mexico. The exhibit highlights the more than 100 species of sharks, skates, and rays documented in the region, giving visitors a glimpse into the underwater world that is teeming with life right along our coasts.

Developed in collaboration with Dr. J. Marcus Drymon and the Marine Fisheries Ecology Lab at Mississippi State University and McWane's own Director of Collections, Jun Ebersole, this exhibit showcases the leading edge of fisheries research. By bringing this expertise into the exhibit, McWane Science Center offers a scientifically rigorous yet engaging experience for visitors of all ages.

Central to the exhibit are specimens from McWane's scientific collections, including skeletons and jaws that provide an up-close look at the anatomy of these remarkable creatures. Visitors can examine the distinctive

## WORLD OF WATER

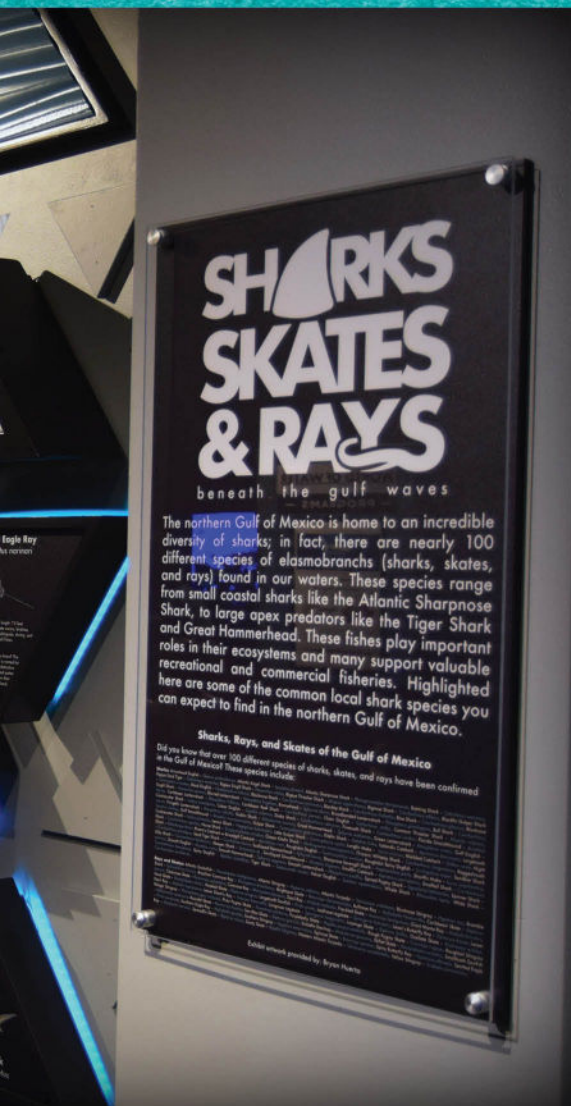






skeletal structure of rays and skates, whose flattened bodies and wing-like fins allow them to glide gracefully along the seafloor, as well as the powerful jaws of various shark species that have evolved over millions of years. These displays not only offer a fascinating view of the adaptations that have made these animals successful predators but also underscore the biodiversity present in the Gulf. *Sharks, Skates, and Rays: Beneath the Gulf Waves* is more than just a showcase of specimens—it's an educational journey that emphasizes the critical role these species play in maintaining the health of marine ecosystems.

This new exhibit is a must-see for anyone interested in marine life, environmental science, or simply the wonders of the natural world. Dive in and discover the hidden depths of the Gulf of Mexico at McWane Science Center!

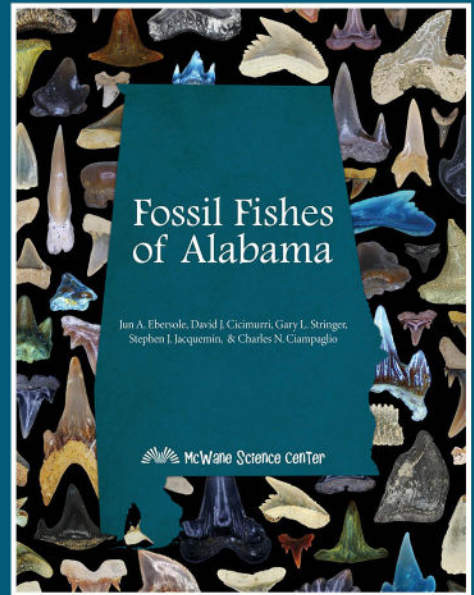


## Shark and Ray Touch Tank Temporarily Closed for Renovation

After many years of eager visitors and salt water corrosion, the Shark & Ray Touch Tank is being renovated. We have built a large holding tank behind the scenes to keep the sharks and rays safe and happy while we work on the tank. We are improving the filtration, resurfacing the concrete, and building a waterproof back wall (the rays like to splash!) The tank will be closed starting on September 4 and we will be re-opening in early November.

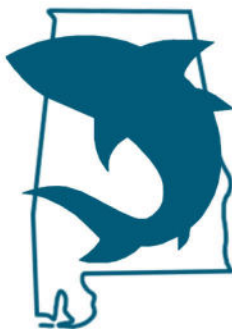






Did you know that Alabama is one of the best places in the world to find fossil fishes? In fact, over the past decade McWane Science Center's paleontologist and Director of Collections, Jun Ebersole, has documented over 400 fossil fish species from the state. To celebrate this amazing diversity, McWane is proud to launch *Fossil Fishes of Alabama*, a first-of-its-kind online and interactive identification guide. From giant shark teeth to tiny bony fish ear stones (called otoliths), this online resource instructs visitors on how to find and identify these fascinating fossils. Led by Ebersole, *Fossil Fishes of Alabama* is an ongoing research project allowing new to be added and old ones to be updated, making this the world's most up-to-date scientific resource on the fossil fishes in this region.

# Fossil Fishes of Alabama



You can explore *Fossil Fishes of Alabama* by visiting [mcwane.org/collections-and-research/fossilfishes](http://mcwane.org/collections-and-research/fossilfishes)



# Feed the Squirrel: Construction Game

Autumn provides so many easily accessible items for play and learning – colorful leaves, prickly pinecones, paintable pumpkins, and of course – acorns! Acorns are excellent, natural tools for counting and engineering. Combine the two with this fun problem-solving game that requires only a few extra recyclable items.

## Materials:

- Acorns
- Cardboard tubes
- Masking tape
- Cup (with a wide mouth)
- Markers (or printed picture of a squirrel)
- Blank wall

## Instructions:

Draw a squirrel onto the side of the cup (or tape a printed picture). Place the cup on the floor, against the wall – open end at the top. Demonstrate to your learner how you can drop the acorn into the cup from low or high on the wall by aligning it with the opening. Next, move the acorn to a different point on the wall and explain that if you dropped the acorn now, it would not drop into the cup because it is not aligned with the cup's opening. Challenge your learner to use the cardboard tubes and tape to construct a slide or shoot that can guide the acorn to the cup from different points on the wall. Count along as you feed the squirrel your acorns.

Join us at Itty Bitty Magic City this Fall as we explore the many wonders of our world through weekly program offerings! Check out [mcwane.org](http://mcwane.org) for program times.





# Inspiring Curiosity & Making a Difference

## Celebrating Our Amazing Teen Volunteers

McWane would like to extend a heartfelt thank you to our incredible Teen Volunteers who devoted their summer to making a difference and sparking wonder and curiosity. Their enthusiasm, dedication, and hard work have not only brought positive change to our community but have also helped inspire visitors of all ages (and future STEM professionals!). We are deeply grateful for their selflessness and passion for STEM.

If you have a teen in your life who would like to join the volunteer team, applications for the School Year Teen program are open now! Applications can be found on our website and will close on September 22nd.







# *The Magic of Model Trains*

Your favorite holiday tradition will be back in November!  
Follow us on social media for news and sneak peeks

@mcwanescience |    







## **The Member Hotline is Back!**

**(205) 714-8300 - Ext 8484**

The Member Info Hotline is a quick, free, and easy way for members to stay in the know about all the fun and exciting happenings taking place each week at McWane Science Center! So what are you waiting for? Give us a call and plan your trip this week!