



THE QUESTIONEERS

READ. QUESTION. THINK. PLAY!

Step into the World of The Questioners

...where everyone can be an Artist like Aaron, a Leader like Sofia,
a Scientist like Ada, an Engineer like Rosie, and an Architect like Iggy.

PAGE 4



The Questioners by Andrea Beaty. Illustrations © David Roberts. "The Questioners" is a registered trademark owned by Abrams.



Letter from the President

Holidays are times for traditions. In my own family, we have specific foods that always appear at our holiday meals. My mother kept a journal all her life, and every year after Thanksgiving dinner she would read aloud an entry from a past Thanksgiving, sparking family conversation and reminiscing about our favorite holiday memories. Christmas Eve found our family filling the same pew at church for a candlelight service, followed by carol singing around the piano at my mom's house. When it came time to open gifts, the youngest family member was designated as Santa, distributing the presents from under the tree.

We have holiday traditions at McWane Science Center, too. The staff enjoys a Thanksgiving potluck dinner, and Turkey Science is always a fun theme for our visitors on Thanksgiving week. The hanging of decorations from the lobby ceiling, the installation of the holiday wreath over the Loveman's clock on the corner of our building, and the opening of the model trains exhibit are all traditions that help us kick off the season. There are also holiday movies in the IMAX theater, and in the past few years, a visit from the Grinch at a special event for our visitors.

I'm sure your family has special traditions for the holidays. This year, I invite you to include McWane as part of your holiday traditions. Come as a family to see The Grinch or Polar Express in our IMAX. Visit our Cool Stuff Store for unique and appreciated gifts for all ages. Join the fun at The Grinch's Jingle Bell Party. Spend some time with the fabulous model trains on our third floor. Or just enjoy a day at McWane together as a family to take a break from the hustle and bustle of the holiday season.

Whatever your family traditions, I wish all of you a joyous holiday season. I hope to see you soon at McWane Science Center!

Amy Templeton
President and CEO

Contents



COMING SOON TO IMAX

Check out all the amazing movies we have in store for you to enjoy



NEW TRAVELING EXHIBIT

Are you ready to become a Questioneer?



HOLIDAY VOLUNTEER CHEER

Seasons greetings from Volunteer Services



MCWANE HOLIDAY ACTIVITIES

Join us throughout the holiday season for festive fun!



SUSTAINABILITY ON THE BRAIN

Earth Matters exhibit & McWane Re(Sci)cple Initiative inspire eco education

2023 BOARD OF TRUSTEES

Stephen Owens, Chairman • Nick Willis, Past Chairman
Zac Riddle, Treasurer

Pronce Acker, Galvin Billups, Harrison Bishop, Maggie Bolin,
William W. Brooke, Henna Budhwani, Milton Davis,
Arthur Fisher, Jr., Courtney French, David Germany, John Harbert,
David Killion, Amanda Loper, Farah Lubin, Katie Bee Marshall,
Barbara Martin, Kate Mather, Lee Meadows, Jeanne Monk,
Lenus Perkins, Matt Pierce, Travis Pritchett, Carolyn Ratliff,
Jim Screws, Adrienne Starks

PRESIDENT/CEO

Amy W. Templeton

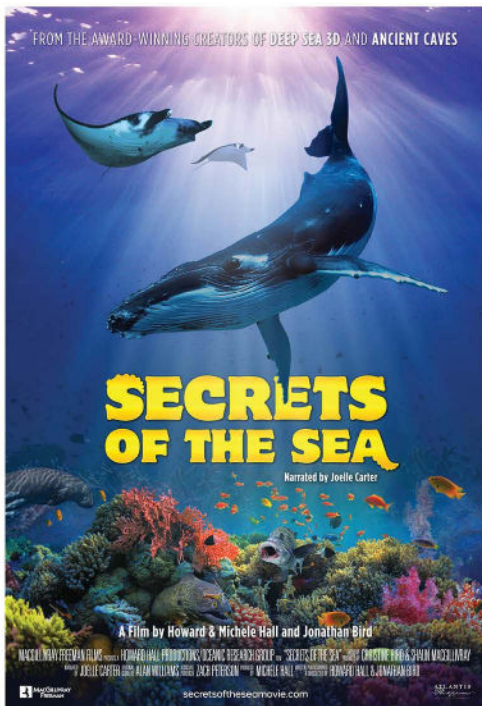
2023 ENDOWMENT BOARD

William W. Brooke, President

Nina Botsford, Frank Caley, Sheri Cook, William Dow, Norman Jetmundsen,
Charlie Miller, Charles Powell, Travis Pritchett, Ashley Robinett,
Bowen Thagard, Forest W. Whatley, Jr., TJ Willings, Nicholas Willis

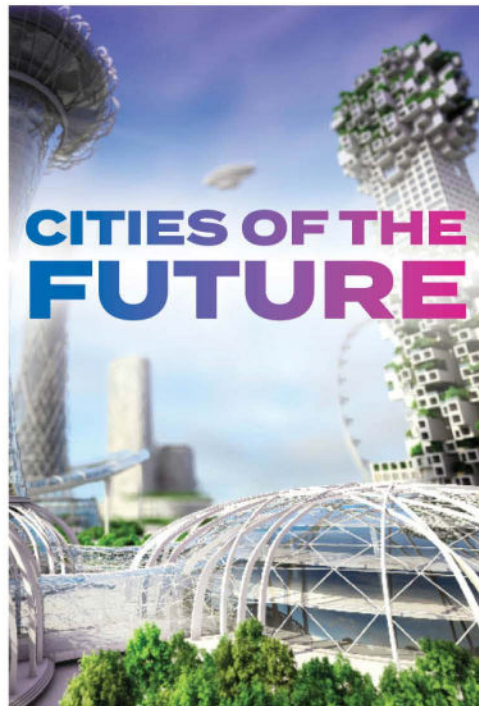
*McWane Science Center is a 501(C)(3) nonprofit organization.
Our mission is to spark wonder and curiosity about our world through
hands-on science experiences*

NOW SHOWING IN IMAX



Secrets of the Sea

Prepare to meet some of the ocean's strangest and most spectacular creatures in the new film *Secrets of the Sea*, narrated by Joelle Carter. From adorable pygmy seahorses and opalescent squid, to manta rays, tiger sharks, a coconut octopus, and much more, *Secrets of the Sea* takes you face-to-face with an astonishing array of marine critters, showing the fascinating ways they interact with each other and their environment. Filmed in the Philippines, Mexico, Tahiti, Indonesia, Palau, Hawaii, California and other locations, and featuring more than 70 different marine species, *Secrets of the Sea* reveals the many wonders and mysteries of our ocean world and demonstrates the critical importance of marine biodiversity to keeping our oceans healthy.



Cities of the Future

Coming in February 2024

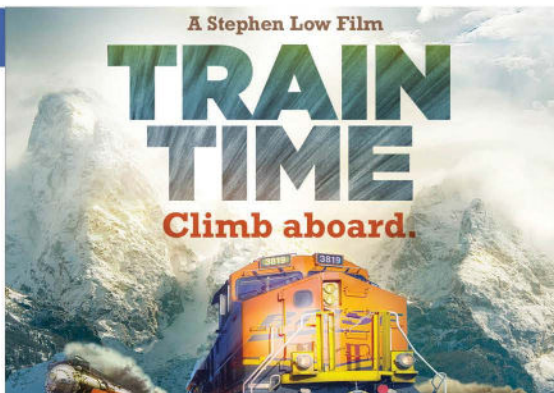
Imagine stepping 50 years into the future and finding smart cities designed to be totally sustainable. Renewable energy is our primary power source, space-based solar power provides solar energy 24 hours a day, everything is recycled, and you have your own individualized pods that run on little or no energy. You can also ride an electric flying vehicle! Traffic jams are a thing of the past. This isn't science fiction. Engineers are making plans for a sustainable world right now. And it's coming to the giant screen! *Cities of the Future* is produced by MacGillivray Freeman Films in association with the American Society of Civil Engineers, the same award-winning team that brought you *Dream Big: Engineering Our World*.

SPECIAL DOCUMENTARY

Train Time

Nov 17 - Jan 7

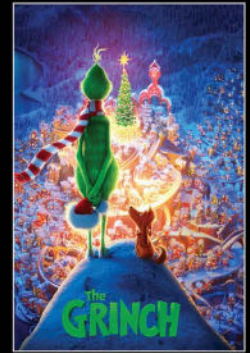
Join the crew of a giant freight train for an eye-popping, music-infused journey across America. Giant diesels, spectacular terrain, tens of thousands of miles of track—and millions of pounds of freight that can't wait. Created by the director of the celebrated IMAX® Experience *Rocky Mountain Express* and his team, *Train Time* is captured on 15/70mm motion picture film, the world's largest film format for exhibition in IMAX® and other giant screen theaters. To deliver the cargo, *Train Time* propels audiences through the rugged beauty and vastness of the American landscape, revealing the brutal challenges of railroading, as well as secrets of the art and science of running the greatest trains. Weaving together present-tech and racing steam locomotives, grit, glamour and glorious landscapes, *Train Time* immerses viewers in a grand tapestry of American railroading.



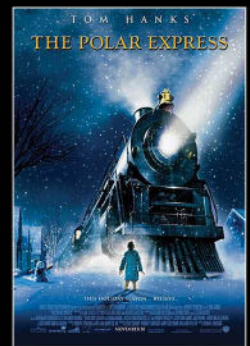
IMAX® DOME

IMAX SEASON PRESENTED BY

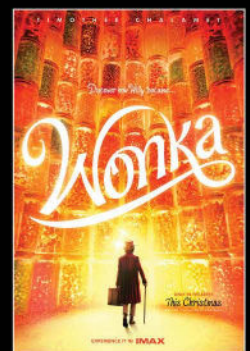
REGIONS



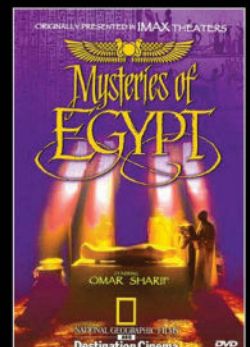
THE GRINCH
DEC. 9, 10, & 17



THE POLAR EXPRESS
DEC. 8, 9, & 10



WONKA
DEC. 15



MYSTERIES OF EGYPT
JAN. 10

PLAN AHEAD

McWane Science Center special days in 2023 are presented by



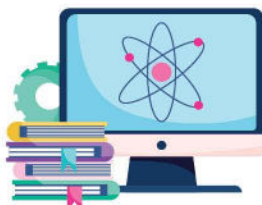
The Questioners: Read. Question. Think. PLAY! Exhibit Opens

Dec 1

Learn more on page 4

Computer Science Education Week

Dec 6 - 10



From space exploration to genomics to AI and machine learning to climate science, tech innovations have led to groundbreaking discoveries across numerous fields. This Computer Science Education Week, we'll dive into interactive programs that highlight the future, emphasizing the path to a more thoughtful and diverse digital world. Together, we'll inspire the next generation of tech innovators to continue shaping the future with creativity and inclusivity.



The Grinch's Jingle Bell Party - Day 1

Dec 9

Join the fun on day one! Learn more about the festivities in store on page 9

Sweet Science

Dec 16 & 17



Indulge your senses at Sweet Science, a delectable day of taste exploration, food chemistry adventures, and a journey into the delicious science of candy. Discover the secrets behind your favorite treats and uncover the magic that makes Willy Wonka's world so sweet.

The Grinch's Jingle Bell Party - Day 2

Dec 17



New Year, New Discoveries

Dec 30 & 31

Embrace the spirit of New Year, New Discoveries at McWane! Kick off the year with a journey into the exciting world of science, where every exhibit and experience is a chance to explore, learn, and make remarkable new discoveries. Join us for a day of hands-on experiments, interactive exhibits, and a celebration of the endless possibilities that the coming year holds.



Spring Break Camps Registration Open

Jan 1

Learn more on page 7



Summer Teen Volunteer Applications Open

Jan 1

Spend an unforgettable summer as a Teen Volunteer at McWane! Our teen volunteers share their passion for science through hands-on demonstrations at engagement stations throughout the Adventure Halls and in our summer camps. Applications open in January and close April 1st.

Earth Matters

Rethink the future

Earth Matters Exhibit Opens

Jan 13

Learn more on page 10



Mysteries of Egypt

Jan 13

Journey back in time to experience the wonders of ancient Egyptian civilization as it comes to life in our IMAX Dome and the Adventure Halls. Delve into the history and allure of this remarkable culture from monumental achievements like the construction of the pyramids to understanding the geography of Egypt & its influence on the Egyptian way of life.

Quintessential Questioners

Jan 27 & 28

Take advantage of your last chance to step into the imaginative world of The Questioners as we say farewell to the traveling exhibit. Experience hands-on activities and interactive experiences that celebrate creativity, problem-solving, and the joy of scientific discovery. Join us for a fun-filled adventure where learning knows no bounds and inquisitive minds of all ages can become true Questioners!



Black History Month

Every weekend in Feb

Celebrate Black History Month each weekend in February as we showcase the incredible contributions and achievements of Black scientists throughout history. Discover the limitless potential of a diverse and dynamic STEM future through hands-on programs that shine a spotlight on their life and work.

VISIT MCWANE.ORG FOR DETAILS

Curious George: Let's Get Curious Exhibit Opens Feb 10

More info to come in 2024!



Engineers' Week continued

engineer or just curious about the marvels of technology, this week promises exploration, collaboration, and the sheer excitement of engineering in action.

Engineering Showcase Feb 23

Engineering Showcase introduces visitors to the field of engineering, the many ways engineers make our lives better, and the countless career opportunities available. Meet real engineers and learn firsthand how they make a difference in our world.

Big Machines Day Feb 24

Learn more below!

Your One Stop Shop
for All Things *Cool*
This Holiday Season



Backyard Bird Count Feb 17

Calling all bird enthusiasts! Join us for a feathered extravaganza as we celebrate the Great Backyard Bird Count, a global initiative that unites birdwatchers worldwide. Be part of this scientific adventure, explore the wonders of avian life, and help researchers better understand these global bird populations as they prepare for their annual migrations. Our event honors the rich history of bird counting, where together, we can spread our love for birdwatching, no matter where we are in the world. Join the joyous chorus of bird lovers and be a part of this thrilling global bird count!

Engineers' Week Feb 21 - 25

From medicine to space exploration, chemistry to architecture, engineers are the innovators meeting the challenges of the future. Whether you're an aspiring

COOL
STUFF
STORE

Make sure to visit the Cool Stuff Store this season to stock up on gifts for the science-lover in your life! Did you know that you don't have to purchase admission to visit the Cool Stuff Store inside McWane Science Center? That's because it's more than just a gift shop. The Cool Stuff Store has STEM kits for kids (and adults) of all ages, plushies of exotic and native animals, stim toys to keep hands busy on long car rides, and so much more. **And remember: members get 10% off their purchase at the Cool Stuff Store!**



Save the Date!
February 24, 2024

BIG
MACHINES
DAY

CRANEWORKS
RENTALWORKS

Your construction crew—McWane Science Center and Craneworks—are gearing up once again to bring Big Machines Day to Birmingham, Alabama. On February 24, 2024, visit McWane Science Center and build an incredible day of science, learning, and fun.

Big Machines Day is from 10 am to 4 pm, and participation is included with the cost of admission.



THE QUESTIONEERS

READ. QUESTION. THINK. PLAY!

A TRAVELING EXHIBITION CREATED BY DUPAGE CHILDREN'S MUSEUM

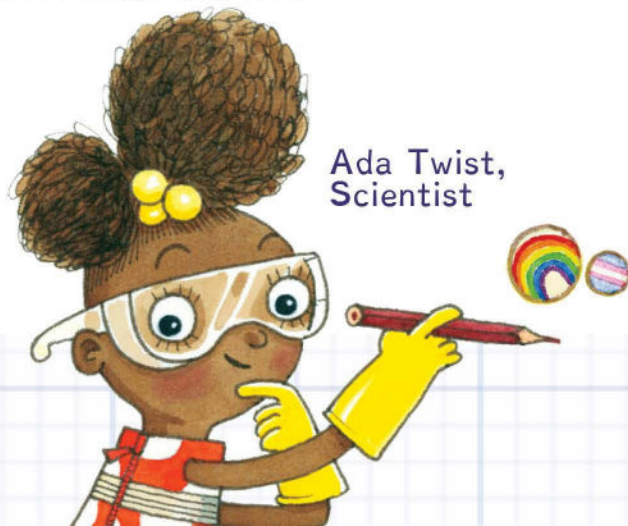
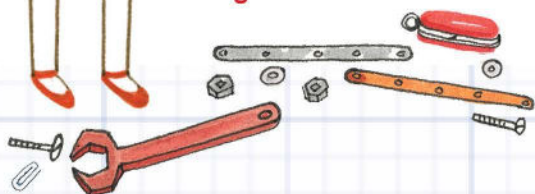


McWane Science Center is excited to present a new traveling exhibit will open on Dec. 1, 2023 – The Questioners: Read. Question. Think. PLAY! Based on the best-selling series of books by author Andrea Beaty and illustrator David Roberts, the imaginative world of Questioners characters Ada Twist, Scientist; Rosie Revere, Engineer; Iggy Peck, Architect; Sofia Valdez, Future Prez, and Aaron Slater, Illustrator comes alive in a hands-on exhibition.

Celebrating diversity, creativity, curiosity, bravery, and resilience, this exhibit will inspire a new generation of thinkers and dreamers through fun, interactive experiences. The story of each character highlights problem-solving, determination, risk-taking, bravery, and the role of caring adults in children's lives. These topics are the very core of children--and adults--developing a lifelong love of learning and discovery. In the exhibit, questions are posed, challenges identified, and problem-solving begins. Miss Lila Greer's classroom serves as a launching point for collaboration, creativity, and discovery. Children will get to fly with Rosie in her Cheese Copter, question how the world works while sitting in Ada's thinking chair, build a bridge to save the class with Iggy, lead a movement with Sofia while playing a game on Sofia's Citizen's Park, and tell a story through drawings like Aaron.



Rosie Revere,
Engineer



Ada Twist,
Scientist

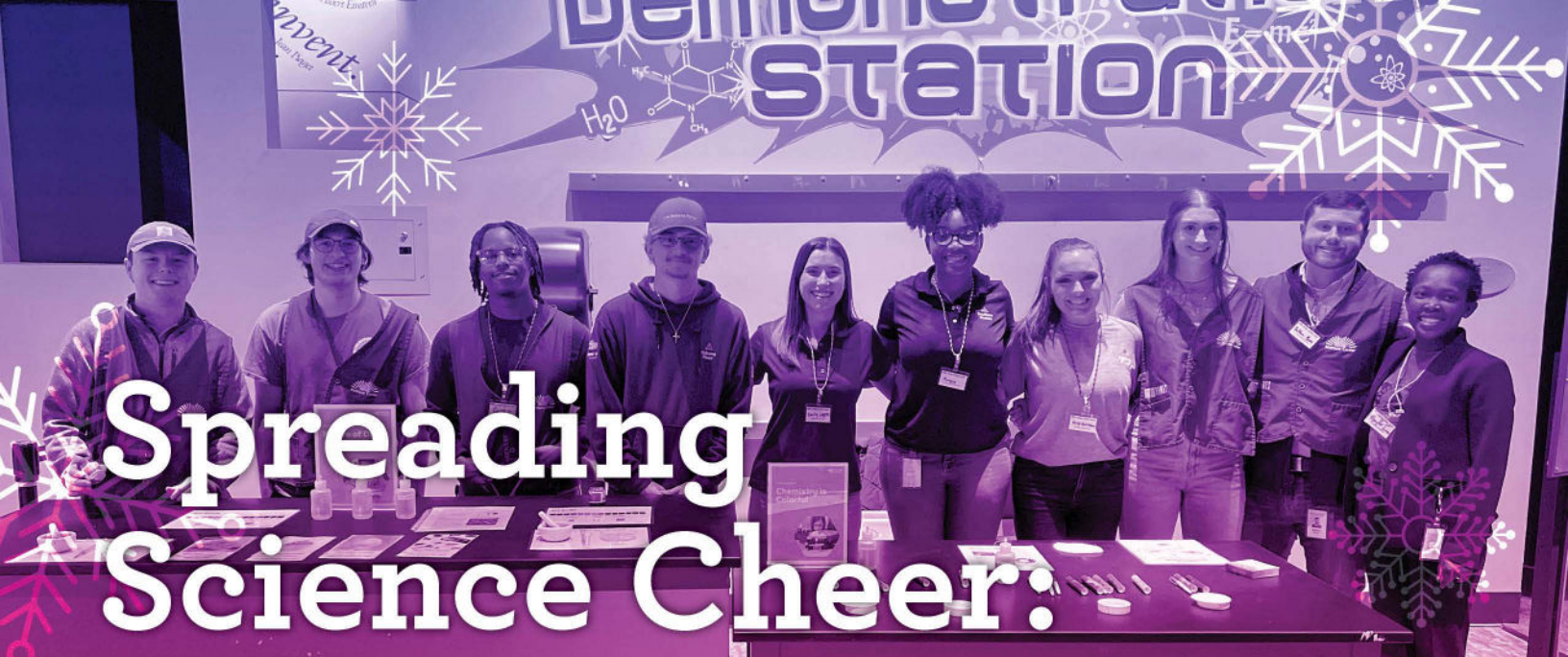
Ada, Iggy, Rosie, Sofia and Aaron promote personal empowerment, curiosity, and perseverance. With different abilities, races, ethnicities, genders, and upbringings, each character is uniquely capable and committed to their creative, STEAM-based pursuits. Their passions lead them to experiment, explore, fail, and try again. Through these bold characters, young children learn that math, science, art, and civic responsibility are for everyone, and failure is part of learning. This exhibition demonstrates a commitment to inclusion while delivering exceptional, innovative arts and STEM experiences for guests. The experiences and related programs support the social emotional and cognitive development of learners by building the confidence, skills, and engagement of parents and caregivers.



Plan Your Visit Today!



Aaron Slater,
Illustrator



Spreading Science Cheer:

A Year-End Celebration of Our Volunteers

Happy Holidays from Volunteer Services!

Our team has spent the year sharing our love of science with the members of our community, and we are excited for a strong finish to 2023 that will lead to an even stronger start to 2024!

As we wrap up this year, we can't help but reflect on the amazing work our volunteers have done throughout the science center. If you have visited McWane and interacted with our Camps, Science Engagement programs, World of Water, or our Collections Lab, you have experienced the impact of a volunteer's dedication.

They serve selflessly and accomplish our mission by working both behind the scenes and on the floor. They are the champions of sparking wonder and have a lasting impact on our guests' experience.

If you are interested in joining the volunteer team at McWane, we have opportunities year-round for people of all ages and interests to get involved! Check out our website for more information!



A Delicious Design Challenge for Cold Nights

This winter, pair a night of hot cocoa with an even sweeter design challenge. Using marshmallows and toothpicks, budding engineers can create igloos, snowflakes, buildings, and more while exploring engineering concepts such as stability, balance, and teamwork. Unleash your child's imagination and watch their engineering skills grow as they construct and reconstruct their very own winter wonderlands - all while enjoying a tasty treat!

itty bitty
MAGIC CITY
CORNER

Materials:

- Mini marshmallows
- Toothpicks
- or-
- Standard Marshmallows
- Pretzel sticks

Instructions:

- 1 Connect marshmallows and toothpicks together to create three-dimensional constructs.
- 2 Explore snowy animal habitats, tall towers, and symmetrical snowflakes by challenging children to assemble structures of their own.

NOTE:

For younger children, we recommend trying standard-sized marshmallows and pretzel sticks.



Join us at Itty Bitty Magic City this Winter as we explore the many wonders of our world through weekly program offerings! See our website for program times and locations.

 **Camp
McWane**



Winter Camps

December 26-29

Registration Open Now!

Closes Dec 20th

Spring Camps

March 25-29

Registration Opens Jan 1st

Register & Learn More Today!
mcwane.org/learning/parents/camps

Holidays at McWane Science Center

Holiday Season Presented by



ROYAL CUP
COFFEE AND TEA



The Magic of Model Trains

All aboard once again for McWane Science Center's 18th season of the Magic of Model Trains exhibit. The Magic of Model Trains is a holiday tradition, and McWane Science Center is excited to invite you to ride along with us this winter. Discover trains of every shape and size inside this awe-inspiring exhibit of locomotive displays. No detail is too small for our miniature landscapes.

Join us and be your own conductor, play "I Spy" throughout the exhibit, take a ride on the McWane Train, and fly through the air on the McWane Zipline. You will find the Magic of Model Trains exhibit now through December 31st on the 3rd floor. We can't wait to see you there!



Member Holiday Party Dec 10 | 5 - 7 PM

As a gift to our members this holiday season, you and your family are invited to our complimentary holiday party! Join us in holiday themed science programs, crafts, and hot chocolate!

Holiday Events

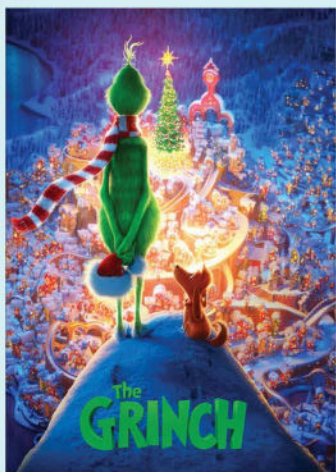
The Grinch's Jingle Bell Party

Dec 9 & 17 | Tickets: \$8 (not including museum admission)

McWane Science Center is once again proud to present an afternoon with Grinch! Join us for hot chocolate, cookies, crafts, a dance party, and a photo opportunity with the Grinch. And for only \$10 more, you can see *The Grinch* (2018) in IMAX!

Timed entry begins at 11:00 AM on Saturday and ends at 3:00 PM. On Sunday, entry begins at 12:30 until 2:30pm.

Holiday Movies in IMAX



The Grinch (2018)
Dec. 9, 10, & 17



The Polar Express (2004)
Dec. 8, 9, & 10



For a limited time only, McWane's IMAX Dome theater will once again be showing two holiday classics: *The Grinch* & *The Polar Express*. Every year, these movies spark holiday magic in our hearts, and there is no better way to experience that magic than on one of the biggest screens in the Southeast! To see showtimes and get tickets, visit mcwane.org/imax-dome.



McWane
*Holiday
Word
Scramble*

1. NHGRIC
2. WOSN RPNOES
3. AOHYLID
4. EMLDO TIARN

5. TOH AHOECLTCO
6. WNMAEC
7. PLZ LENI
8. UOROCDTNC

Answers on Page 11

Earth Matters

Rethink the future

CREATED BY

scitech
PERTH • AUSTRALIA

produced by
imagine
exhibitions

Sponsored by

 **Alabama Power**
Foundation



Are you ready to explore our hanging planet through a different lens, immerse yourself in incredible ecosystems, and learn how the smallest of actions can have a big impact on our natural world? McWane Science Center is excited to announce the opening of *Earth Matters: Rethink the Future* in January 2024. This exhibit will allow you to dive deep into the science behind biodiversity, climate and carbon emissions and discover how we can innovate solutions for a more sustainable future.

In nature, everything is connected—air, land, water. As you explore *Earth Matters*, look out for those connections along the way. Solve complex

challenges and push your own ideas to new heights. Then, rethink a more sustainable future—starting in your own backyard. See the inner workings of a tree, listen and learn about endangered species and experience large-scale visualizations of changes taking place in our natural world. Learn more about the big issues, like biodiversity, rising global temperatures, and how to manage carbon emissions.

***Earth Matters: Rethink the Future*
opens on Jan 13, 2024**



Introducing Recycling Bins to Raise Sustainability Awareness at McWane

As a science education center, we believe it is our duty to serve as an example for our community and promote stewardship of our planet. That's why the McWane Science Center is happy to announce our public recycling program. In our Fall 2022 edition of Eureka, we reported on The Re(Sci)cle Initiative, an interdepartmental committee of committed staff with a passion for sustainability. The Re(Sci)cle Initiative began with the goal of addressing the need for back-of-house recycling at McWane Science Center. Now, only a little over a year later, the committee, along with the Environmental Services department, have created a system that allows visitors to recycle aluminum cans and plastics 1 & 2 throughout McWane.

To accomplish this, McWane is partnering with local organizations who specialize in recycling and share our commitment to environmentally friendly practices. With these partnerships, we will be able to track our progress, celebrate accomplishments, and share our experiences with our community. If you would like to learn more about McWane's recycling program, visit mcwane.org/learning/re-sci-cle.



HOMESCHOOL LABS

Are you a parent looking for a way to spark a love of science in your child? Our homeschool labs are designed to supplement what children are learning at home, giving them the opportunity to safely engage with scientific equipment, experiments, and principles in ways that aren't easily executed in the home classroom. Let us help you introduce your child to the wonders of the universe with our hands-on labs!

Homeschool Lab Registration Closes Dec. 29, 2023

Learn More Today At:

mcwane.org/learning/parents/homeschool-labs



Give more **WOWS.**



Give more than just a gift with a McWane Science Center Membership. Members not only get free admission but also a 10% discount at the Cool Stuff Store, where you can find STEM kits to bring home with you! Visit mcwane.org/become-a-member or call (205) 714-8318 to learn more about gifting a membership this holiday season.